

COVER WALLBASE**Paintable cover wallbase with Incizo® technology****PGISKRCOVERMD240**

2400 x 16 x 129 mm

Package: 6 pcs/pack

**Product description**

The Pergo® paintable cover wallbase is designed to be installed over an existing wallbase board. This saves time during installation as the old wallbase board can simply remain in place: you do not need to remove it. This way, you also avoid damage to the wall.

Usage

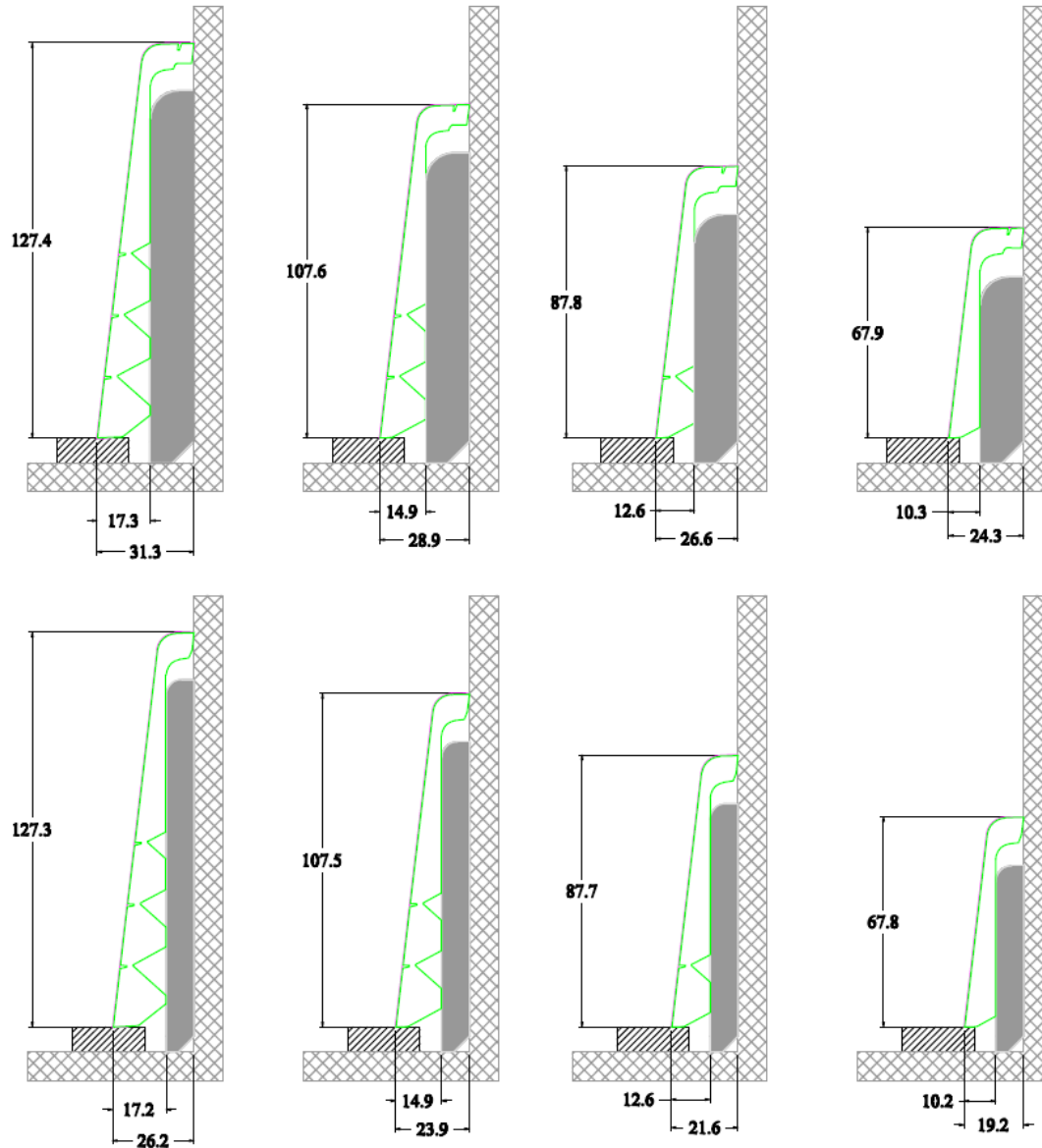
Wood is the main component of your Pergo® floor. Because humidity levels in a room can vary - between summer and winter for example - the floor must be able to move, to expand and contract on all sides. For this reason an expansion gap of at least 8 to 12 mm needs to be foreseen around the floor. Pergo® offers a wide range of wallbases and profiles to finish off this expansion gap. (for more information: www.pergo.com).

The Pergo® paintable cover wallbase with Incizo® technology offers the possibility of painting your wallbase the same colour as your wall. Or you can simply not paint the wallbase and leave it white.

Properties

- ✓ Easy
The Pergo® cover wallbase is developed to be installed over an existing wallbase board rather than having to remove it first. As such, the job can be done quickly and without damaging the wall.
- ✓ The paintable cover wallbase offers many possibilities, thanks to the patented Incizo® technology:
 - You determine the height of the wallbase. There are four different heights to choose from.
 - You can also adjust the width of the cover wallbase to the width of the wallbase that is to be covered.
- ✓ Can be painted on immediately, with most paints.
TIP: Always test the bonding of the paint first. If necessary, apply a primer or sand down the surface first.
- ✓ Painting, however, is not a must.
You can choose not to paint the wallbase and simply use it as white wallbase.
- ✓ Cables can be hidden behind the wallbase board.

Variable height and width

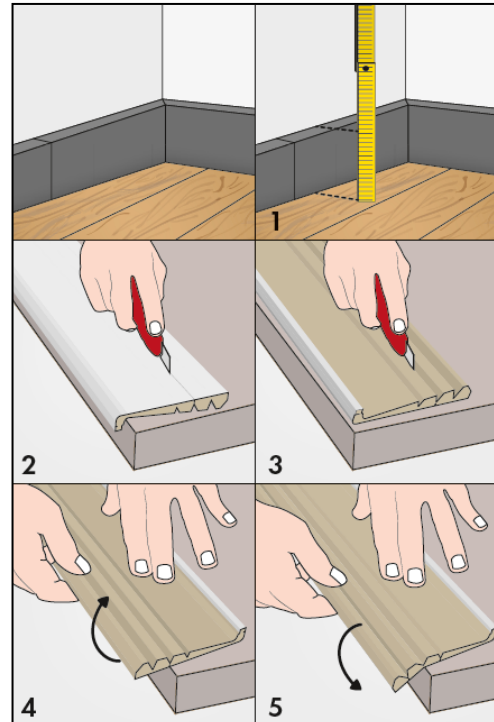


Instructions for use
1. The correct height

- Measure the height of the existing wallbase board.
- Place the wallbase on a flat surface (such as a table), with the white front facing up. Ensure that the flat surface of the reverse side is properly supported.
- Choose the height of the Pergo® cover wallbase. Make sure it is high enough to cover the existing wallbase.
- Cut the front edge of the wallbase with a cutter. Place the cutter in one of the foreseen grooves and slide it with a smooth pulling motion along the entire length of the wallbase.

TIP: wear gloves!

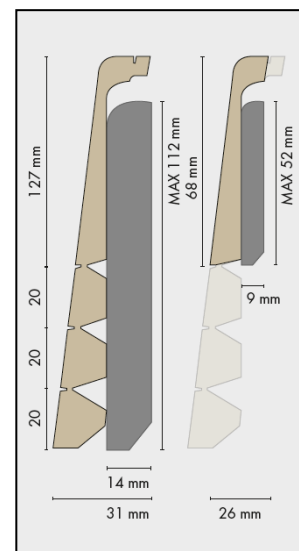
- Place the wallbase with the back facing up. Again, make sure that the flat surface is fully supported.
- Cut in the opposite groove on the back of the wallbase. Press a little harder.
- You can now easily break off the surplus part of the wallbase. For stability, place one hand on the flat part of the wallbase that you will be using. Break off the other part using your other hand.


2. The correct width

- Measure the width of the existing wallbase.
- If the width is less than or equal to 9 mm, then make the upper part of the wallbase narrower. To do this, place the wallbase on a flat surface with the white face down, once again properly supported. Place the cutter in the groove and slide with a smooth pulling motion along the entire length of the wallbase.

TIP: wear gloves!

- You can now easily break off the surplus part of the wallbase. Place one hand to stabilise the flat part of the wallbase that you will be using, and break off the other part using your other hand.



COVER WALLBASE

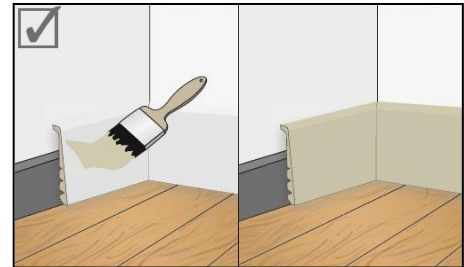
3. Installation and finishing

- Attach the cover wallbase to the existing wallbase using Pergo® Multiglue adhesive.

TIP: make sure the surface of the existing wallbase is cleaned and degreased, so that the adhesive adheres properly.



- Paint the wallbase in the desired colour or use it as a white wallbase. **(When painting, always test the bonding of the paint. If necessary, apply a primer or sand down the surface first)**



4. Finishing off corners

- Look for or cut a small block with the same width as that of the existing wallbase.
- When mitre-sawing the wallbase cover, put the block behind the wallbase. This will give you the correct angle.

